



EQUINE GUELPH HEALTH *flash*



YOUR SEASONAL HEALTHCARE REMINDER

[Trouble viewing this email? Open in your web browser](#)

Spring 2018



Alert: [Rabies in Canada update](#) & video with [Dr. Alison Moore](#)

Video: [Debunking Myths about Strangles with OVC's Dr. Luis Arroyo](#)

Video: [Part 2 - 5 Debunking Strangles Myths](#)

Webinars: [Equestrian Canada Biosecurity training for vets & facility operators](#)

SPRING IS HERE - ARE YOU READY?

[Join our Mailing List](#)



Managing and Feeding the Orphaned or Rejected Foal

Highly experienced equine nutritionist, and frequent Equine Guelph online course guest speaker, Don Kapper, outlines a highly successful program for raising orphan or rejected foals to help them grow and mature the same as non-orphans.

[Read on](#)



Research Targets Equine Virus

Researchers at the University of Guelph are searching for clues to better manage an EHV virus that can cause late gestation abortion in mares.

[Read on](#)

Recap on Parasite Control

[Check out this video from the Moredun Foundation](#)

[Parasite control with Dr. Peregrine](#)



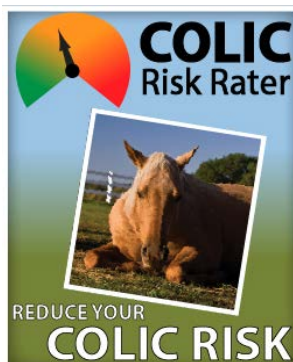
[How to collect manure for a fecal egg count test](#)



More Spring Tips in the Equine Guelph Archives

- [Mud management](#)
- [Laminitis and nutrition](#)
- [Plan vaccinations](#)
- [Biosecurity - travelling with horses](#)
- [Extending hay supply](#)
- [Ensure your horse is fit](#)
- [Every equine needs the dentist](#)
- [Planting trees for a healthy horse](#)

Healthcare Tool of the Month



What is Your Risk of Colic this Spring?

How will your horse be introduced to spring grass and other changes in feed that may coincide with the spring season?

More excerpts from highly experienced equine nutritionist, Don Kapper discussing monitoring manure and how feed changes impact the gut.

Then visit Equine Guelph's interactive Colic Risk Rater healthcare tool, kindly sponsored by Intercity Insurance Services Inc. and CapriCMW Insurance Services Ltd. Learn how you can reduce your horse's risk of Colic.

[Read on](#)

[Visit Colic Risk Rater](#)

Hey Students Grades 5 - 8 in Ona Enter to Win!



Youth Literary Derby

Meet a sweet standardbred foal and then write a poem or story for your chance to win prizes up to \$250 for you and your school!

Equine Guelph is proud to partner with the Youth Literary Derby to get the word out on this fun contest.

Write About



a Standardbred Foal

You can Win
up to \$250
(Plus Same for Your School)
Entries Close June 15, 2018

Submit by e-mail by June 15, 2018
entries@YouthLiteraryDerby.ca

[Contest Details](#)

Online Educational Offerings

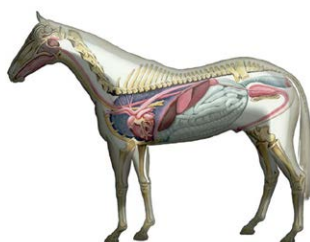


Equine Guelph Courses beginning May 7

Management of the Equine Environment, Equine Finance & Risk Management, Equine Health & Disease Prevention, Equine Functional Anatomy, Equine Genetics, Equine Welfare, Equine Behaviour.

Early Bird Deadline: April 6th, 2018

[Learn more and Register!](#)



[Anatomy Lab](#)

at Ontario Veterinary College
April 21 & 22



TheHorsePortal.ca

[TheHorsePortal.ca](#) - short online courses



All Equine Guelph courses
qualify for coaches updating
credits

Industry Partners

Equine Guelph thanks our HEALTHflash partners



MERCK
Animal Health

Specialists In:
Dewormers | Vaccines





Get the Next Generation of Flu Protection



Visit our sponsors:

[Merck Canada](#) , [Greenhawk](#) , [System Fencing Stalls & Equipment](#) , [Ontario Veterinary College](#) .

Support for the original development of this initiative was provided by Vétoquinol Canada, Merck Canada, Equine Guelph, Canadian Animal Health Institute, Greenhawk, System Fencing Stalls & Equipment, Ontario Veterinary College, Agriculture and Agri-Food Canada through the Canadian Agricultural Adaptation Program (CAAP)



IMPROVE LIFE.

Information for subscriptions is collected and protected in compliance with the University of Guelph's Guidelines on the Protection of Privacy and Access to Information.

The information collected will not be shared or used by a third party and will be kept confidential.

To ensure consistent delivery of this publication, please add our sender address - jbellamy@uoguelph.ca - to your address book

Equine Guelph | University of Guelph | 519-824-4120 ext. 54205 | horses@uoguelph.ca | EquineGuelph.ca

STAY CONNECTED

